

This functionality is primarily used by health policy researchers and the media as an easy way to obtain a large set of data. The data in the one table comes from the data that is displayed in the Nursing Home Compare Tool.

For information about nursing homes in a particular geographical area, you should use the Nursing Home Compare tool instead of downloading the data.

**Data Refreshes:** Generally, the downloadable databases are refreshed within 24 hours after the data are refreshed on medicare.gov. The date “Modified” in the zipped file indicates the date of the last refresh of the downloadable database.

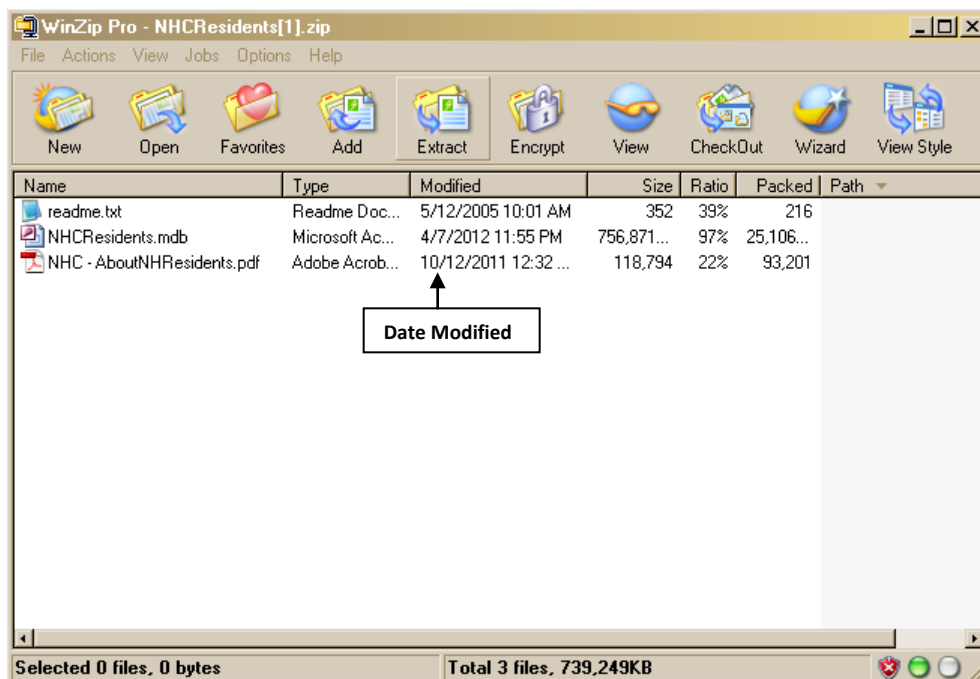
- You can tell when the Nursing Home Compare data has been updated by looking in the bottom left corner of the [Home Page](#).
- The date “Modified” in the zipped file only indicates the date the data was last manipulated, not the date it was posted to the site.

You can also find Nursing Home Compare data on [data.medicare.gov](http://data.medicare.gov). This website allows you to view the data files embedded on a webpage without downloading them. The data on data.medicare.gov can usually be viewed the same day it has been updated on Nursing Home Compare. Use [data.medicare.gov](http://data.medicare.gov) to customize views and filter the Nursing Home Compare data.

**Note:** Beginning in July 2013, the platform for the Nursing Home Compare data sets will be [data.medicare.gov](http://data.medicare.gov). The downloadable databases will not be available after that time.

[View more information on Downloadable Databases](#)

[Learn more about Nursing Home Compare data.](#)



## Changes to the Downloadable Database

In October 2006, March 2007, April 2008, and December 2008, the downloadable database files were modified. Please read the .pdf files that accompany each of the five parts to learn what was modified before using the files.

## Quality Measure Data Collection Period

The collection period for the quality measures long-stay resident measures is three months. The collection period for the short-stay resident measures is six months. The collection period for the influenza vaccination measure is for the annual “flu season”, October – March. The collection period for the pneumococcal vaccination measure is for six months with a six-month delay. Currently, the refresh of Nursing Home Compare quality measures occurs in the first month of each quarter. Quality Measure Data Collection Dates are located on the table at the end of this document.

The Nursing Home Compare database is divided into five (5) parts to ease the downloading process. To view the entire database, all five (5) parts must be downloaded. The five (5) parts are as follows:

1. About the Nursing Home
2. About the Nursing Home Residents
3. About the Nursing Home Inspection Results
4. About the Nursing Home Staff
5. About the Nursing Home Ratings

This document describes only the **About the Nursing Home Residents** part.

**About the Nursing Home Residents database contains one table.**

dbo\_vwNHC\_MSR

1. ProvNum
2. NursingHomeName
3. MeasureTitle
4. Score

**NOTE: the Survey Date field has been removed from this part.**

**About the Nursing Home Residents** comma separated file values contains two flat files (**dbo\_vwNHC\_MSR\_Q1** and **dbo\_vwNHC\_MSR\_Q3**).

The **dbo\_vwNHC\_MSR\_Q3** CSV flat file contains four (4) fields. The field names and values are the same as those found in the **dbo\_vwNHC\_MSR\_Q1** below.

Table **dbo\_vwNHC\_MSR** contains four (4) fields. This table provides quality measure scores achieved by each nursing home.

1. ProvNum: varchar(50)

Lists the Nursing Homes by their provider identification number.

2. Nursing Home Name: varchar(80)

Lists the name of the nursing home.

3. Measure Title: varchar(500)

**Quality Measures** for the Nursing Home Quality Initiative. Lists the name of the measures used to describe the residents in the nursing homes. The following are the measures used:

**Short-Stay Residents are people needing short-term skilled nursing care or rehabilitation services following a hospital stay, who are expected to return home**

	Quality Measure Title	Publication Website Date
<b>1</b>	Percent of short-stay residents who self-report moderate to severe pain	Jan 2004
<b>2</b>	Percent of short-stay residents with Pressure ulcers that are new or worsened	Jan 2004
<b>3</b>	Percent of short-stay residents assessed and given, appropriately, the seasonal influenza vaccine	Oct 2006
<b>4</b>	Percent of short-stay residents assessed and given, appropriately, the pneumococcal vaccine	Oct 2006
<b>5</b>	Percent of short-stay residents who newly received an antipsychotic medication	July 2012

**Long-Stay Residents are people in an extended or permanent nursing home stays**

	Quality Measure Title	Publication Website Date
<b>1</b>	Percent of long-stay residents experiencing one or more falls with major injury.	July 2012
<b>2</b>	Percent of long-stay residents with a urinary tract infection	Jan 2004
<b>3</b>	Percent of long-stay residents who self-report moderate to severe pain	Jan 2004
<b>4</b>	Percent of long-stay high-risk residents with pressure ulcers	Jan 2004
<b>5</b>	Percent of long-stay low-risk residents who lose control of their bowels or bladder	Jan 2004
<b>6</b>	Percent of long-stay residents who have/had a catheter inserted and left in their bladder	Jan 2004
<b>7</b>	Percent of long-stay residents who were physically restrained	Jan 2004
<b>8</b>	Percent of long-stay residents whose need for help with daily activities has increased	Jan 2004*
<b>9</b>	Percent of long-stay residents who lose too much weight	Nov 2004
<b>10</b>	Percent of long-stay residents who have depressive symptoms	Jan 2004
<b>11</b>	Percent of long-stay residents assessed and given, appropriately, the seasonal influenza vaccine	Oct 2006
<b>12</b>	Percent of long-stay residents assessed and given, appropriately, the pneumococcal vaccine	Oct 2006
<b>13</b>	Percent of long-stay residents who received an antipsychotic medication	July 2012

\* January 2004 National Rollout 14 National Quality Forum endorsed quality measures

**4. Score: float**

Lists the nursing home score for the measure titles. In some cases, the score will not be text, which describes why the score is not available.

**Quality Measure Score Footnotes**

- 199: small denominator suppression: <30 for the chronic (long-stay) measures and <20 for the acute (short-stay) measures
  - Displayed as: Not Available - The number of residents is too small to report. Call the facility to discuss this quality
- 201: score is missing
  - Displayed as: Not Available - The data for this measure is missing. Call the facility to discuss this quality